

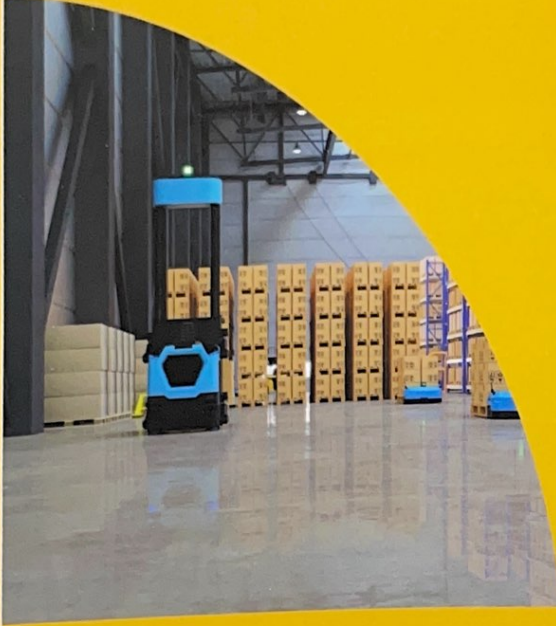


مدينة خالد اللوجستية

أول مدينة صناعية خاصة متكاملة بالرسيل



مخازن بمساحات مناسبة
صغيرة ، متوسطة، كبيرة
تناسب كافة الأنشطة المختلفة



Stores with suitable sizes
small, medium, large
Suitable for all kinds of activities



تتوفر مكاتب ادارية ومطابخ تحضيرية
ودورات مياه في جميع المخازن

Every warehouse has administrative offices
Kitchen for drinks and toilet

مخازن بها كل تجهيزات وتوصيلات
الكهرباء ، المياه ، مكافحة الحريق
على أحدث المعايير والمواصفات العالمية

Stores with all equipment
and services (electricity, water
and fire fighting)
The latest international standards
and specifications



طرق معبدة للوصول لكل مخزن
بالقرب من طريق مسقط السريع



Paved roads to reach each store
Near Muscat Expressway

مباني سكنية حديثة لسكن العاملين

٧٠٠ غرفة عمالية

تتسع لعدد ٧٠٠٠ شخص

كل مبنى يضم ٣٣ غرفة

٦٦ دورة مياه



ملاعب كرة قدم
كريكت
مساحات خضراء كبيرة
خدمات ترفيهية مذي



Football

Cricket fields

large green spaces

Various entertainment services

ملاعب كرة قدم
كريكت
مساحات خضراء كبيرة
خدمات ترفيهية مختلفة



٢٢ مبنى للعاملين
٣٣ غرفة في كل مبنى
مساحات خضراء
أماكن ترفيهية



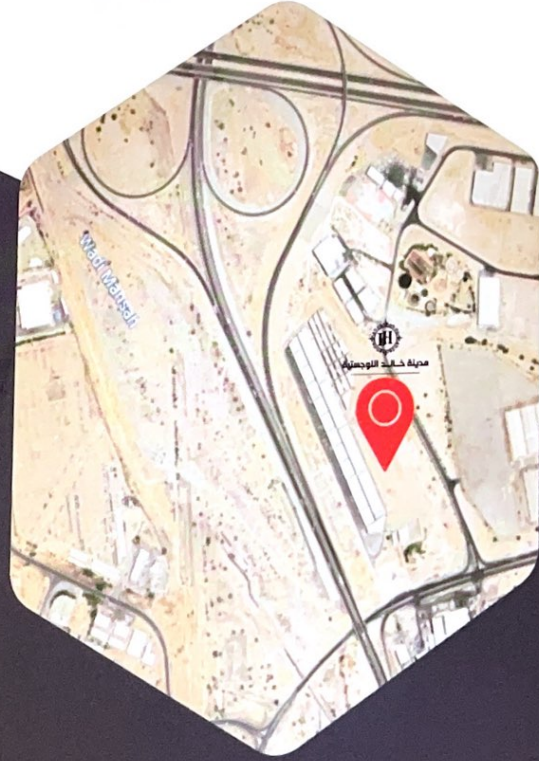


22 staff buildings
33 rooms in each building
Green area
Places of entertainment

مخازن تحت الإنشاء للبيع

المرحلة الثالثة لمدينة خالد اللوجستية

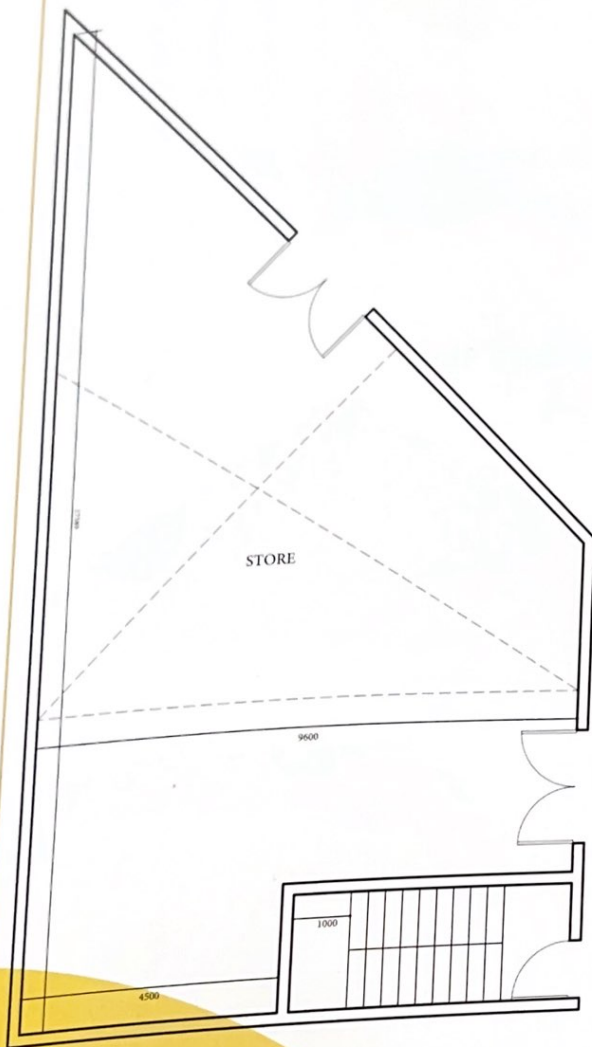
- بناءً على طلب عملائنا المستثمرين وبعد بيع جميع مخازن المرحلة الاولى والمرحلة الثانية
- تم طرح المرحلة الثالثة لمدينة خالد اللوجستية
- مخزن مرخص (مخزن مع ورشة مع مكتب) في مدخل الرسيل الصناعية
- على طريق مسقط السريع
- بأسعار مناسبة حسب المساحة والموقع بعائد يفوق ١٠٪



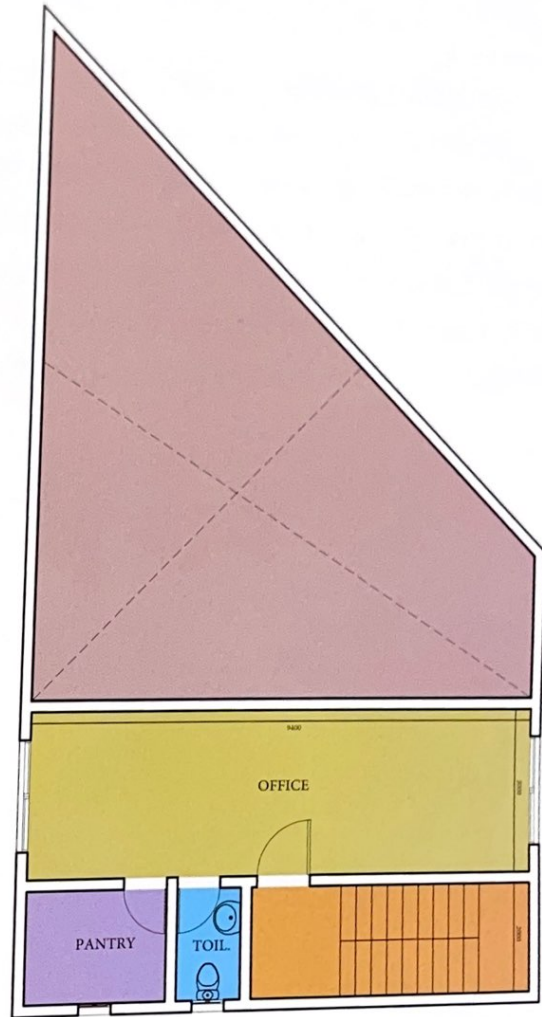
Stores for sale

- The third phase of Khalid logistic city
- At the request of our investor clients
- After selling all the stores of the first and second phases
- Licensed warehouse (store with workshop and office) at the entrance of Rusayl Industrial
- Located on Muscat expressway
- Affordable prices with a return of more than 10%.

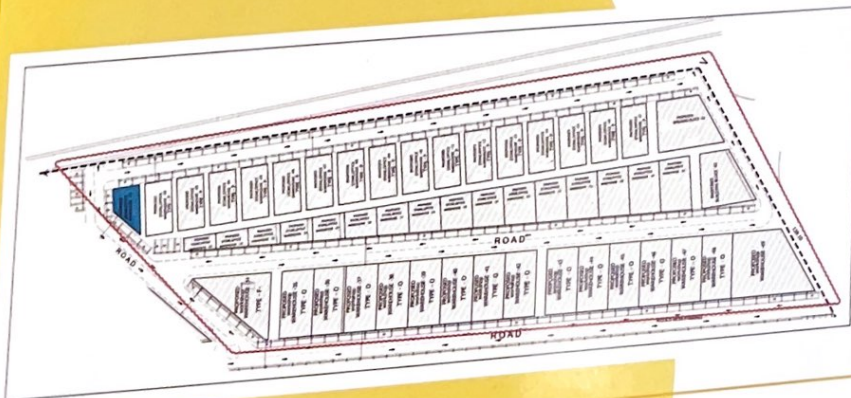




GROUND FLOOR PLAN
132.86 SQ.M

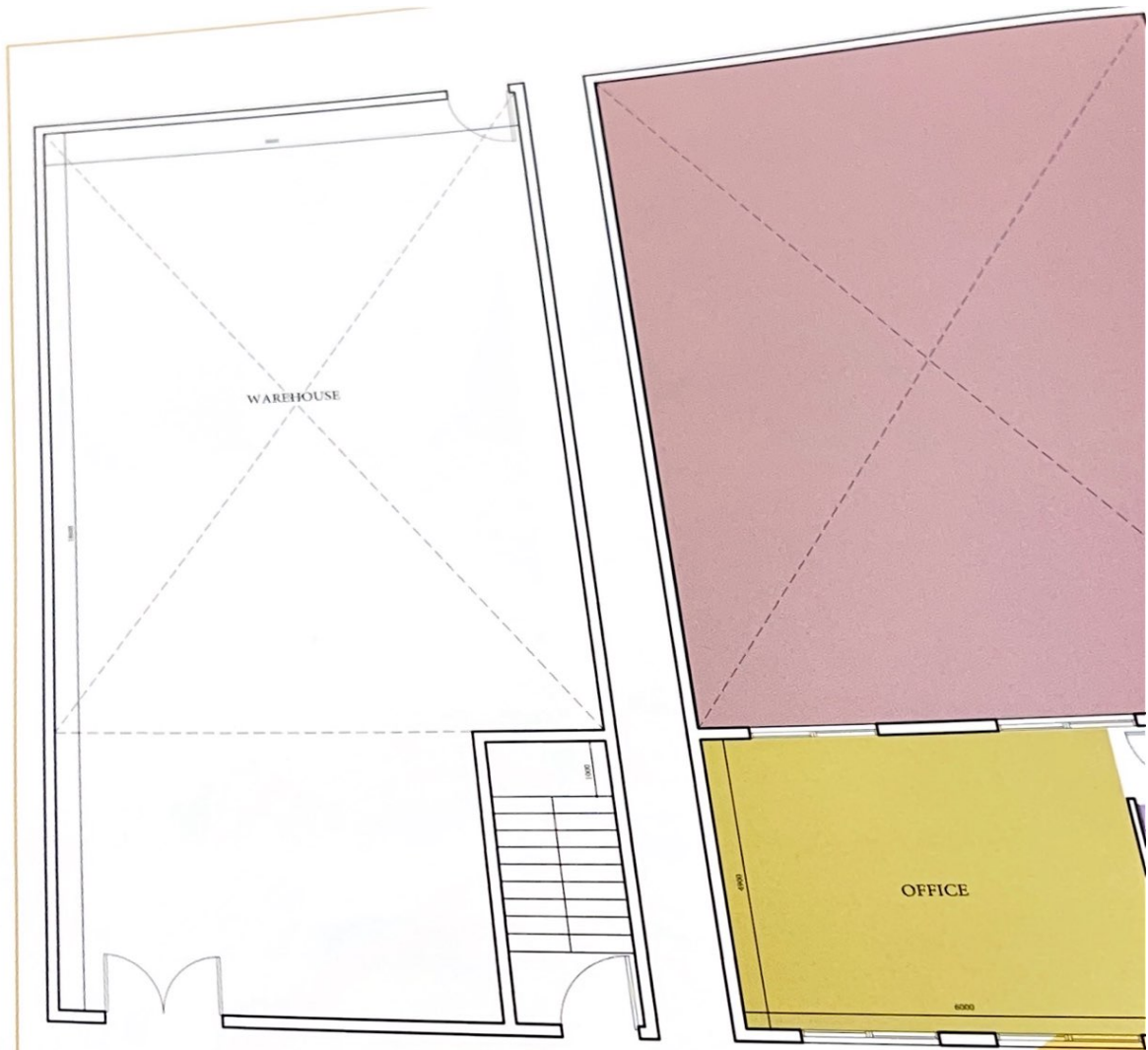


FIRST FLOOR PLAN
31.20 SQ.M



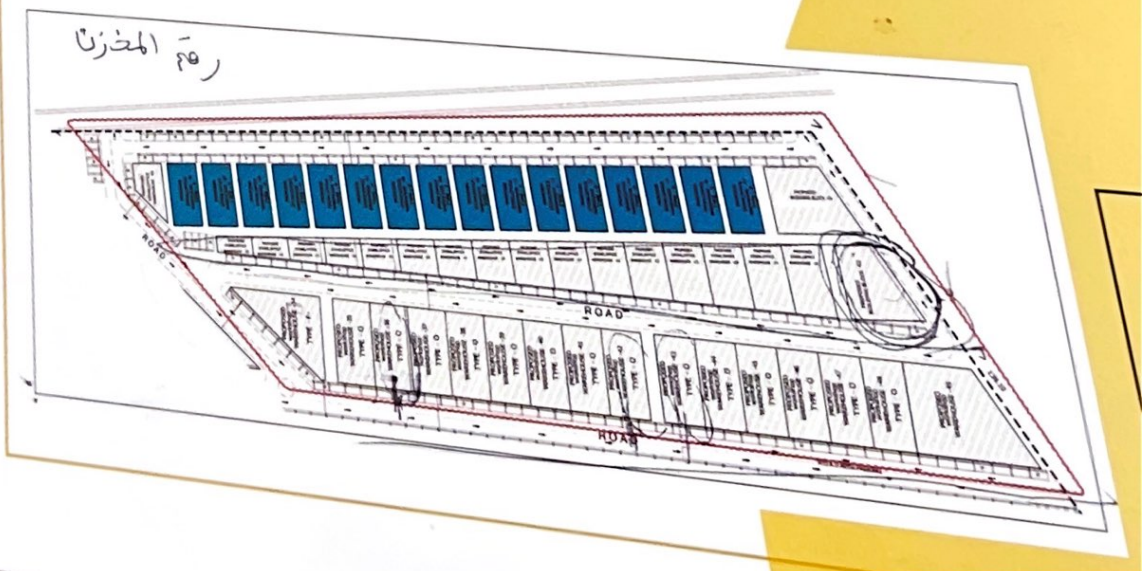
WAREHOUSE (01)

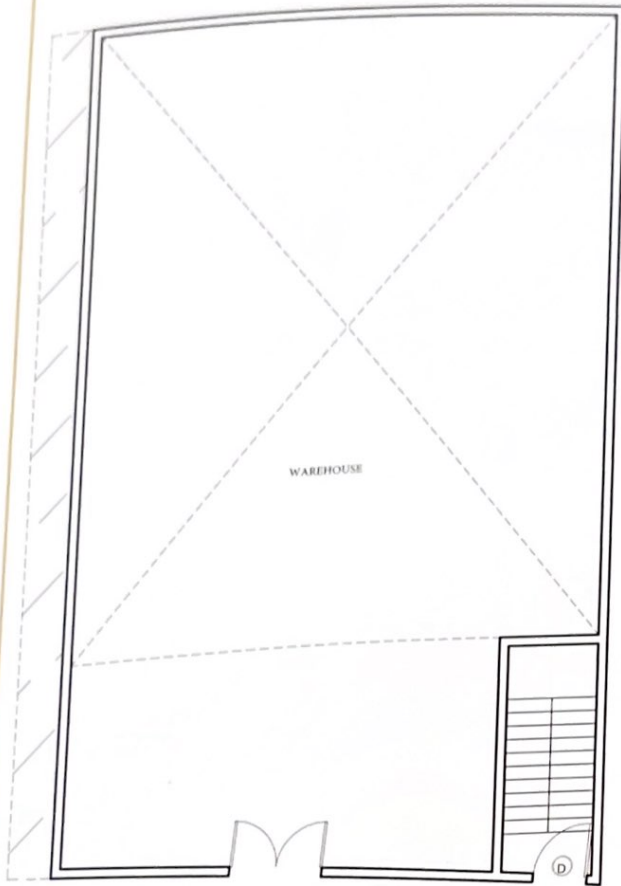
NO. OF FLOORS: TWO
PLOT NO.: 1070
BLOCK, PH 1



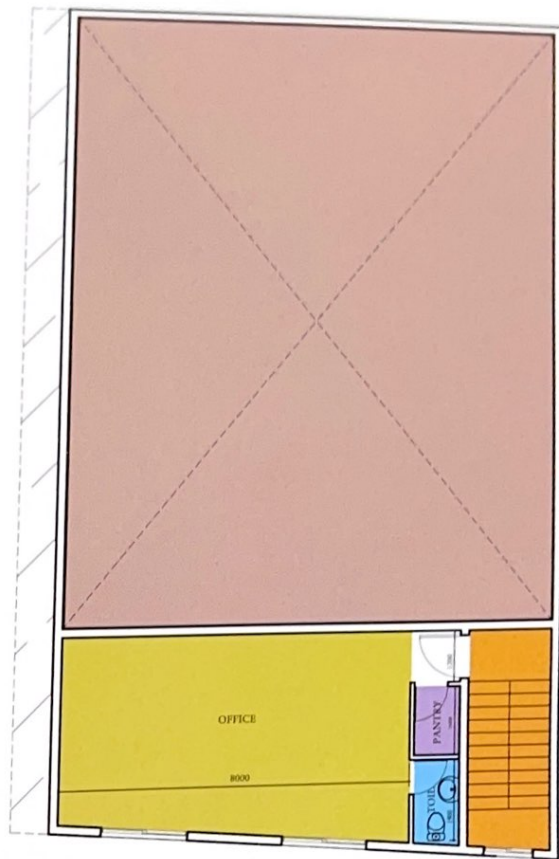
GROUND FLOOR PLAN
230.3 SQ.M

FIRST FLOOR
53.00 SQ.M

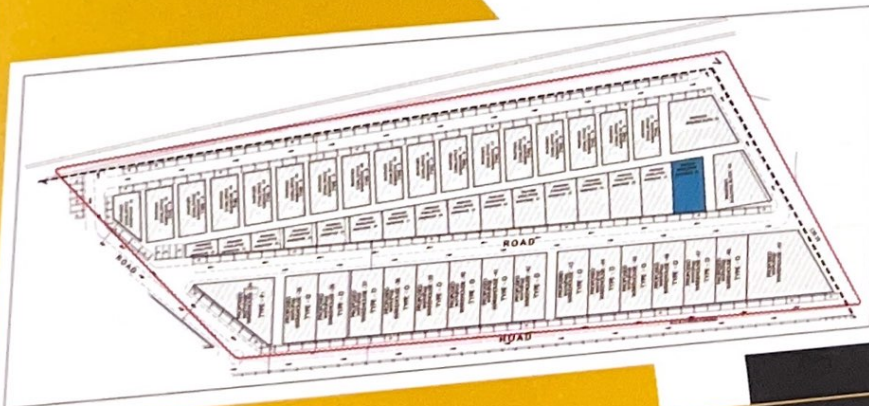




GROUND FLOOR PLAN
235.35 SQ.M

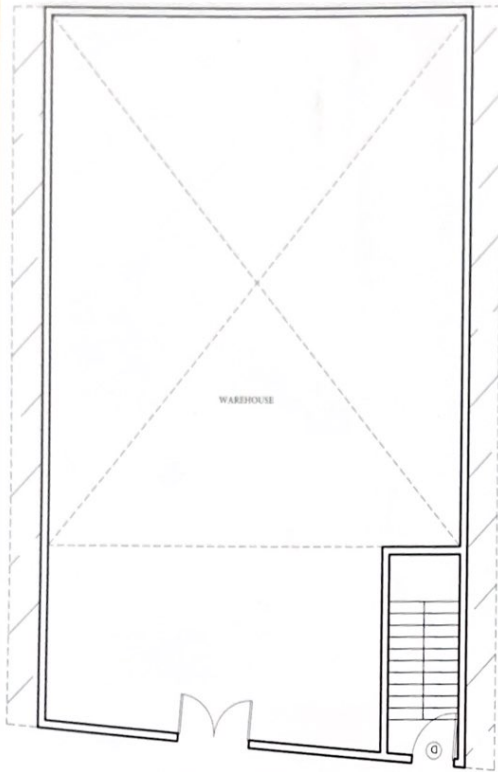


FIRST FLOOR PLAN
61.63 SQ.M

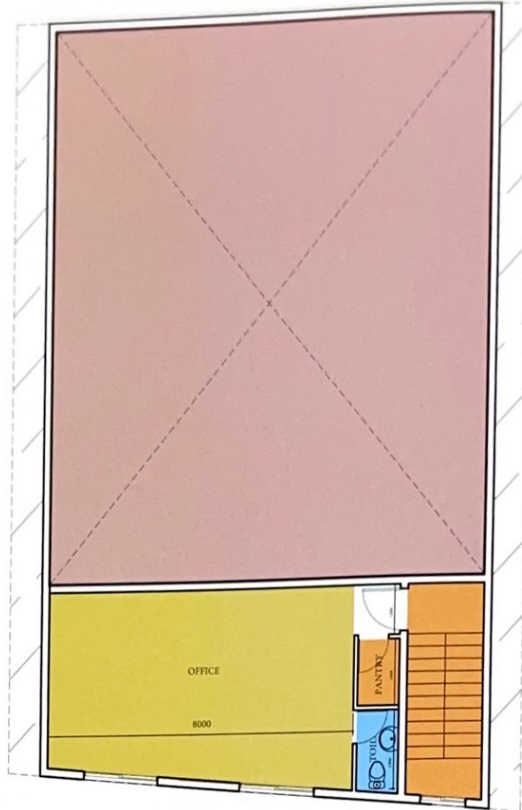


WAREHOUSE (18)

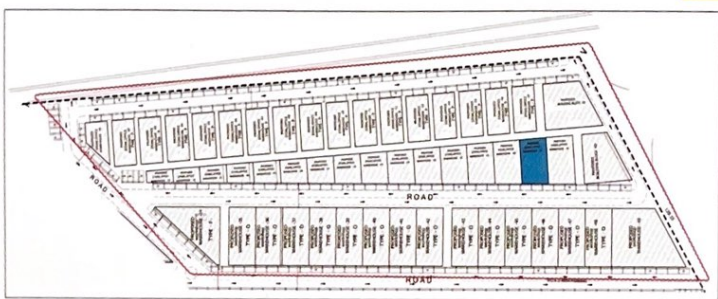
NO. OF FLOORS: **TWO**
PLOT NO.: **1070**
BLOCK, PH 1



GROUND FLOOR PLAN
223.81 SQ.M

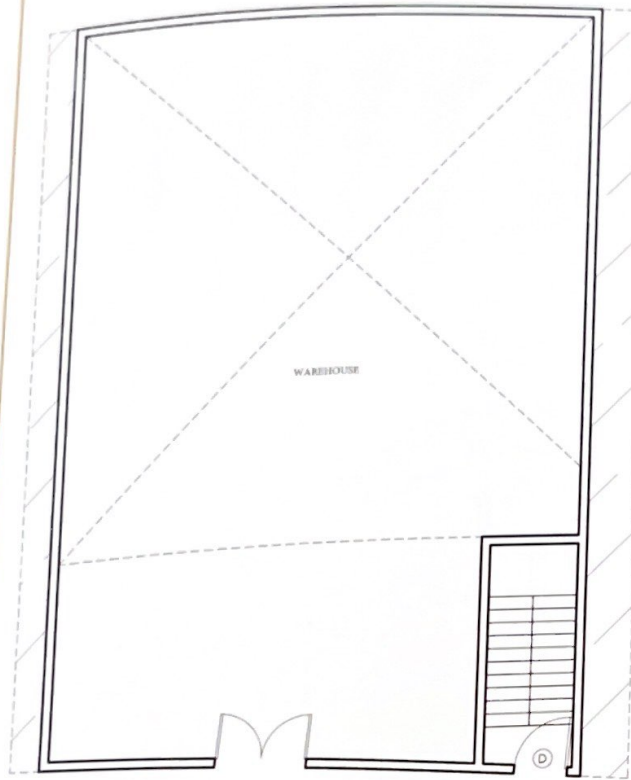


FIRST FLOOR PLAN
61.63 SQ.M

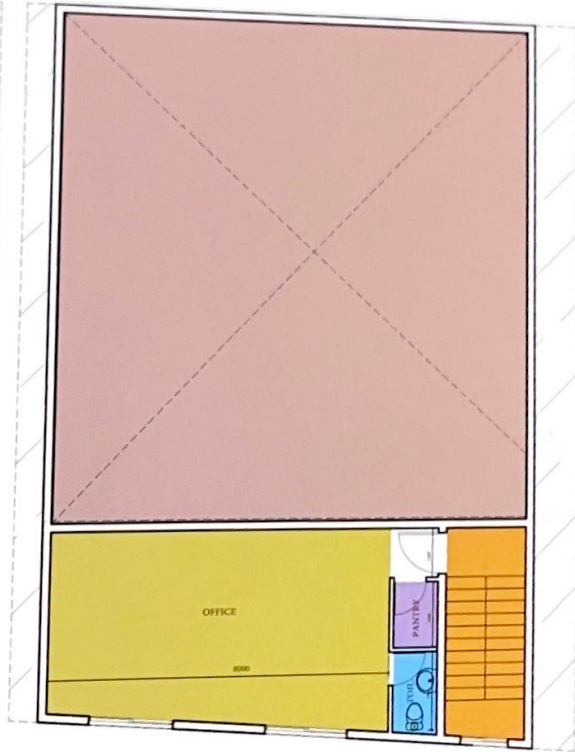


WAREHOUSE (19)

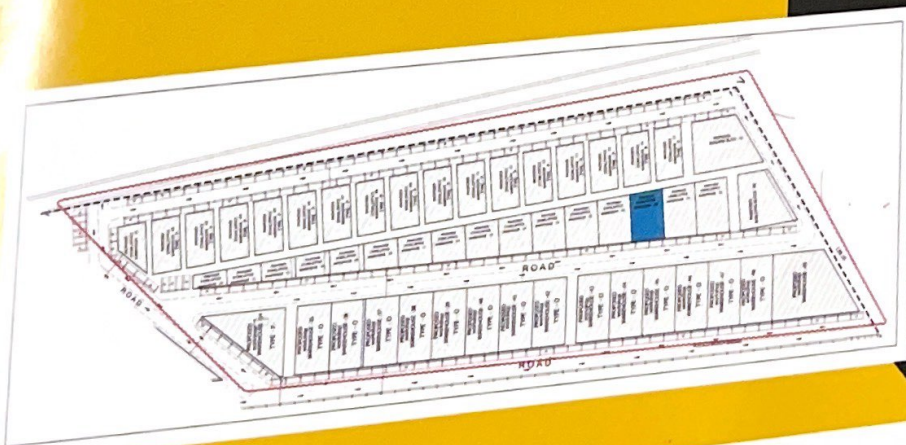
NO. OF FLOORS: **TWO**
PLOT NO.: **1070**
BLOCK, PH 1



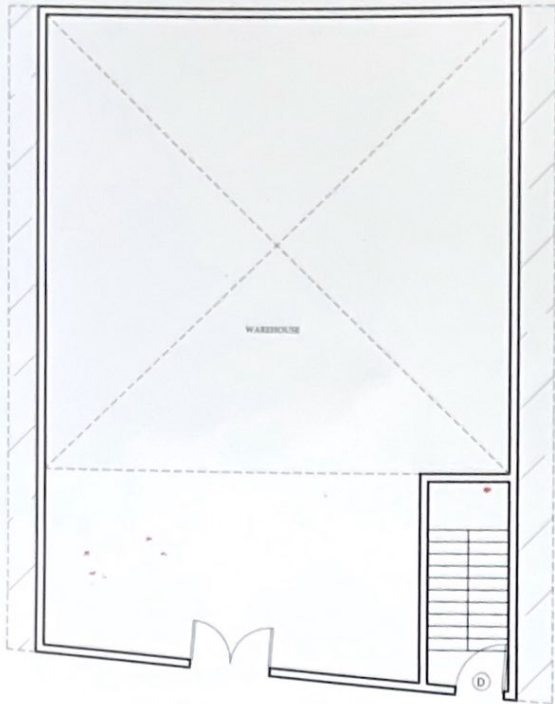
GROUND FLOOR PLAN
212.28 SQ.M



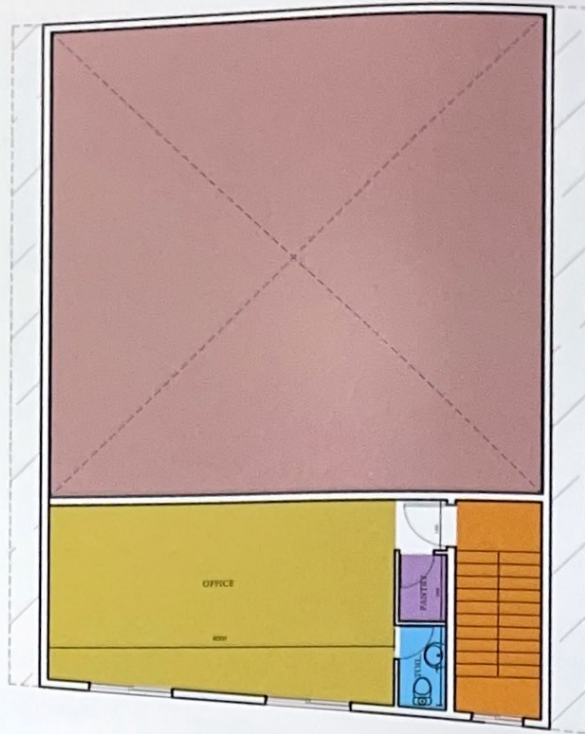
FIRST FLOOR PLAN
61.63 SQ.M



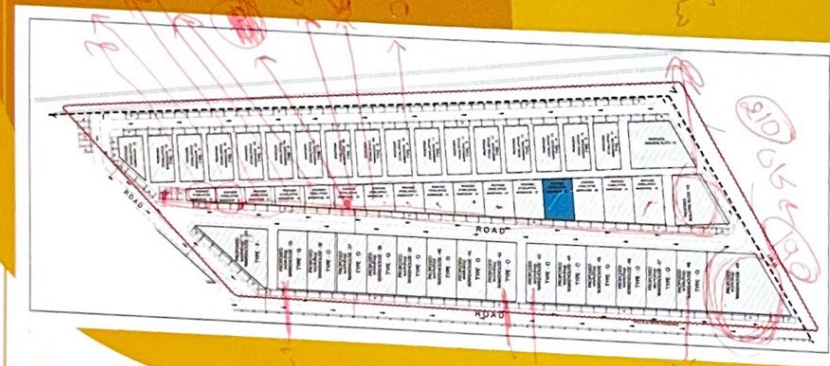
WAREHOUSE (20)
NO. OF FLOORS: TWO
PLOT NO.: 1070
BLOCK, PH 1



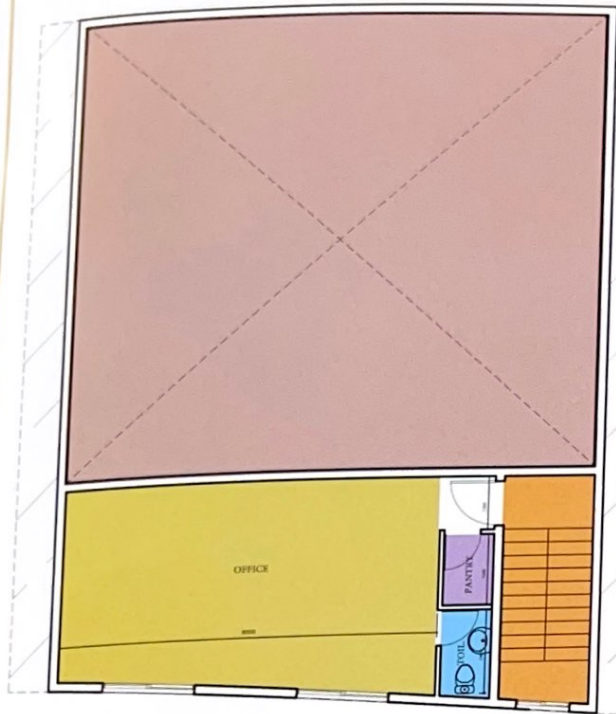
GROUND FLOOR PLAN
200.75 SQ.M



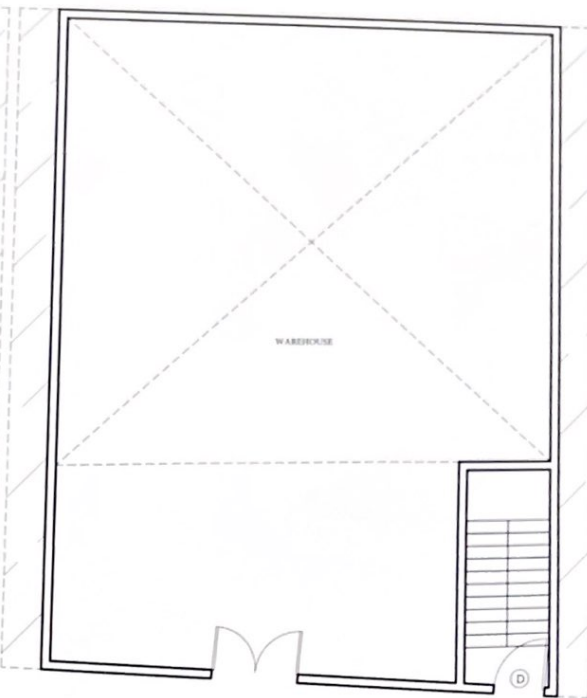
FIRST FLOOR PLAN
61.63 SQ.M



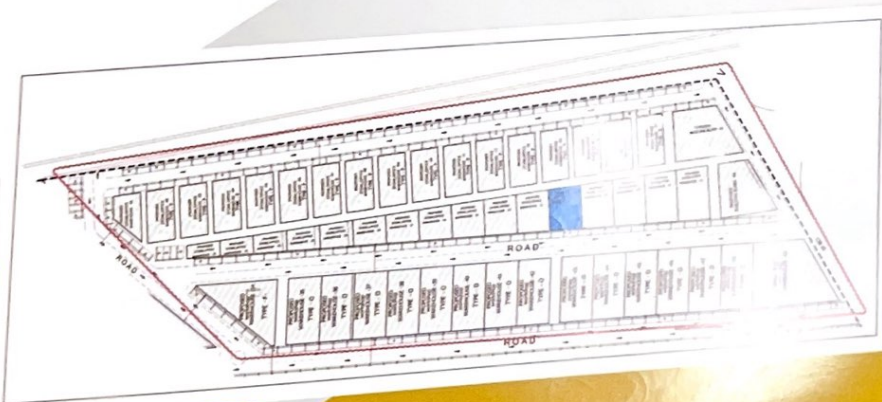
WAREHOUSE (21)
 NO. OF FLOORS: **TWO**
 PLOT NO.: **1070**
 BLOCK, PH 1



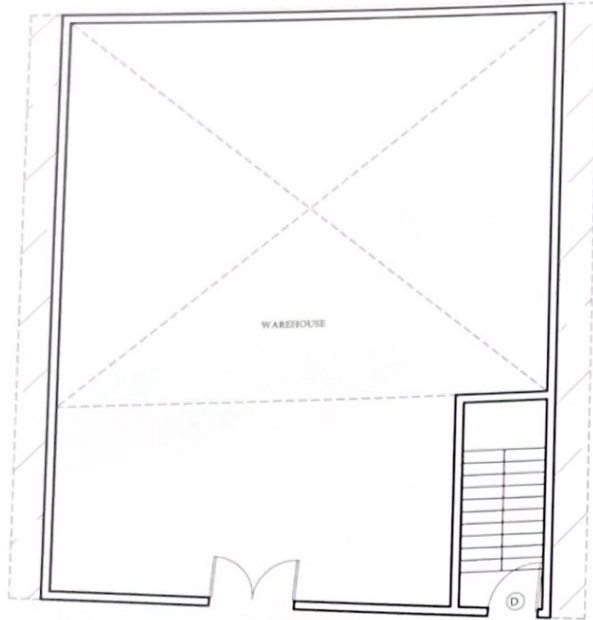
FIRST FLOOR PLAN
61.63 SQ.M



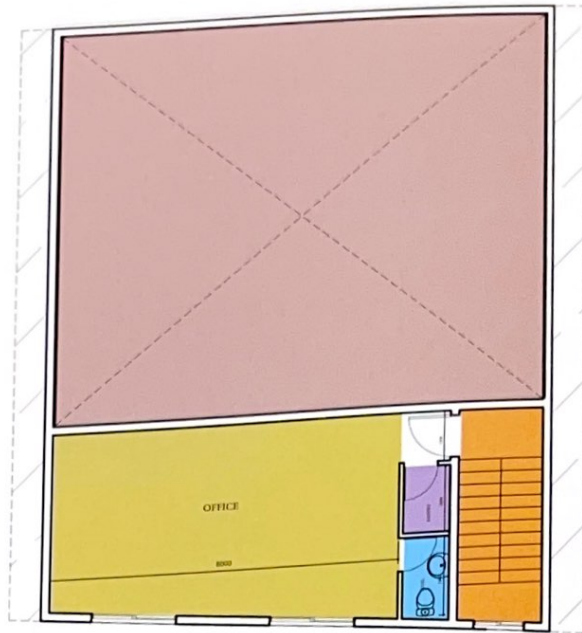
GROUND FLOOR PLAN
189.21 SQ.M



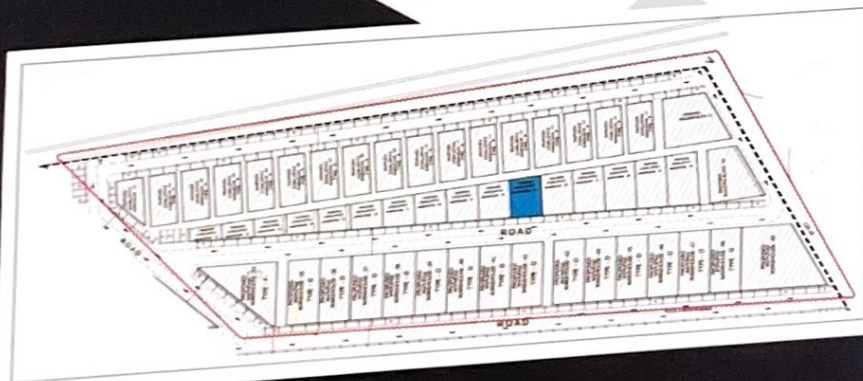
WAREHOUSE (22)
 NO. OF FLOORS: **TWO**
 PLOT NO.: **1070**
 BLOCK, PH 1



GROUND FLOOR PLAN
177.68 SQ.M

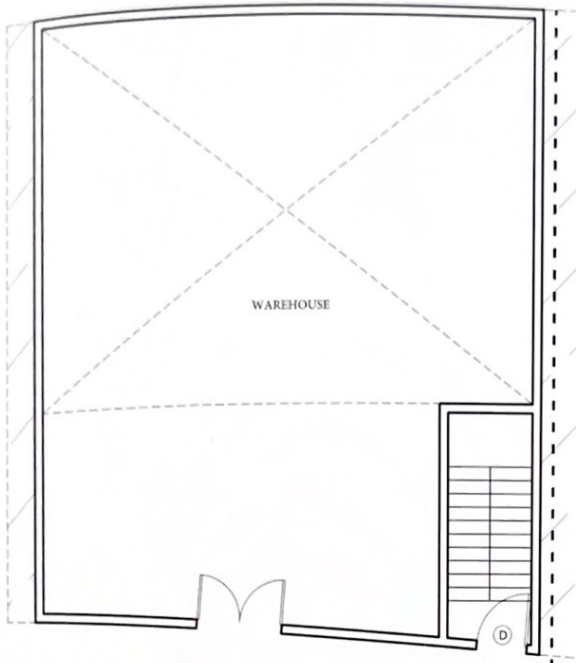


FIRST FLOOR PLAN
61.63 SQ.M

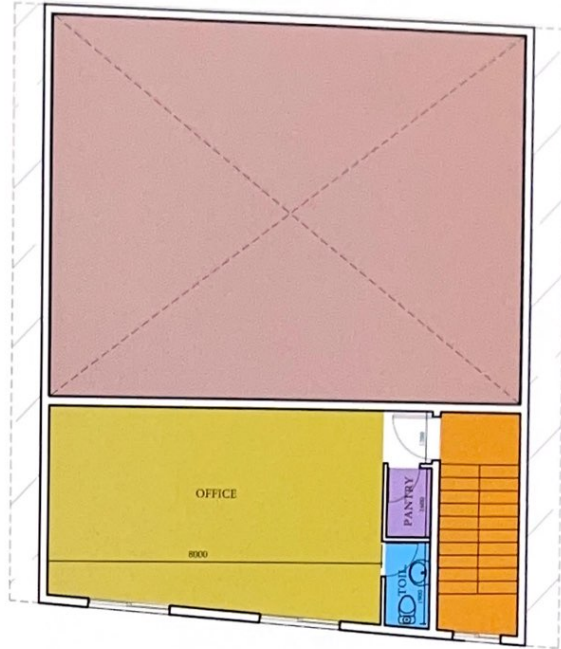


WAREHOUSE (23)

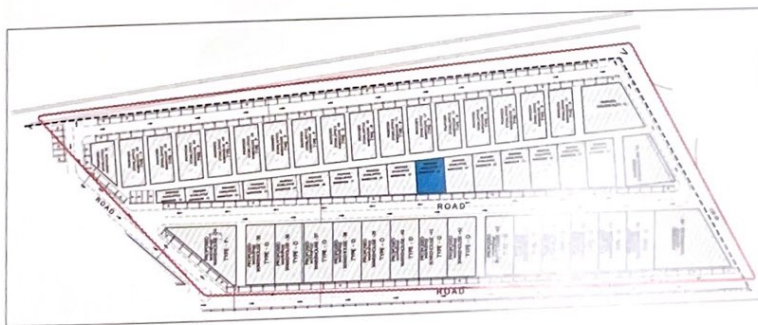
NO. OF FLOORS: **TWO**
PLOT NO.: **1070**
BLOCK, PH 1



GROUND FLOOR PLAN
166.15 SQ.M

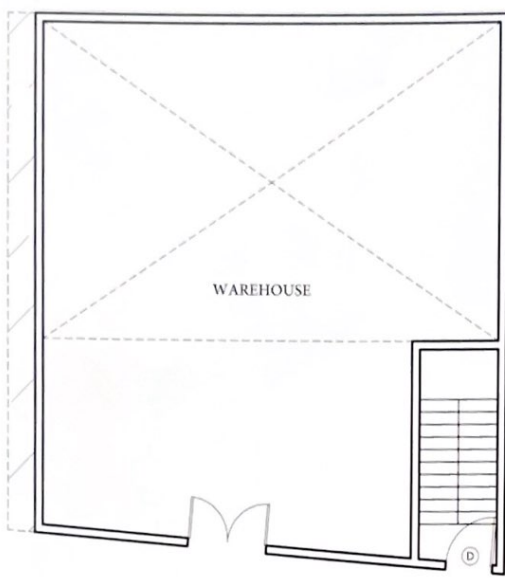


FIRST FLOOR PLAN
61.63 SQ.M

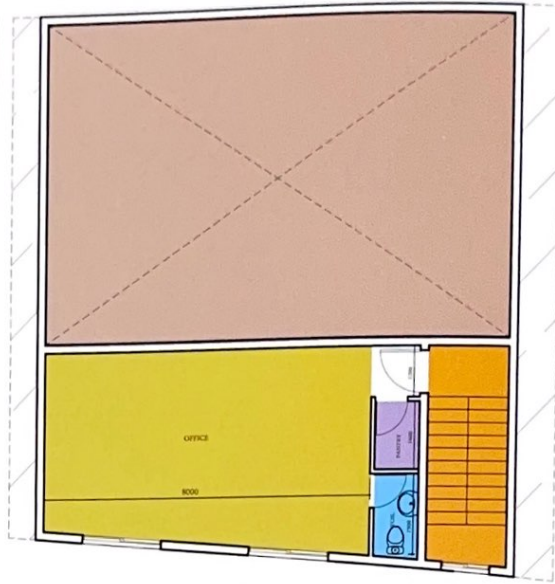


WAREHOUSE (24)

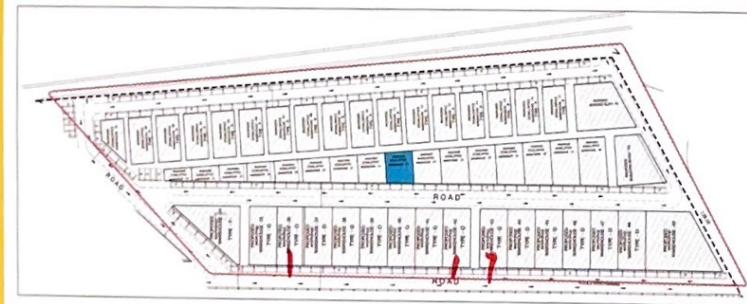
NO. OF FLOORS: **TWO**
PLOT NO.: **1070**
BLOCK, PH 1



GROUND FLOOR PLAN
154.61 SQ.M

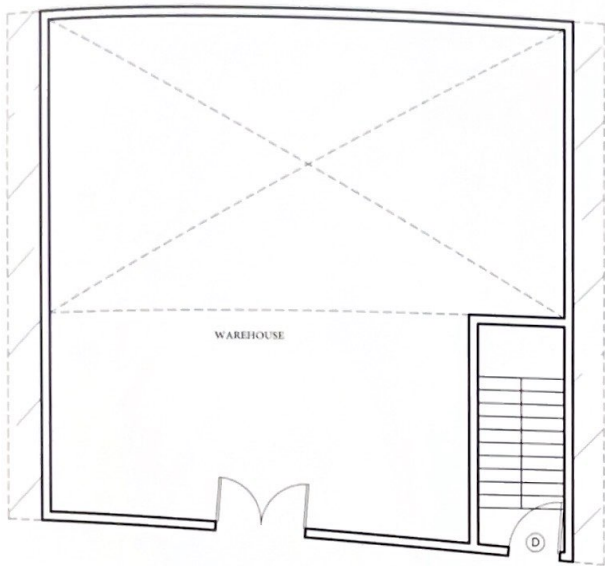


FIRST FLOOR PLAN
61.63 SQ.M

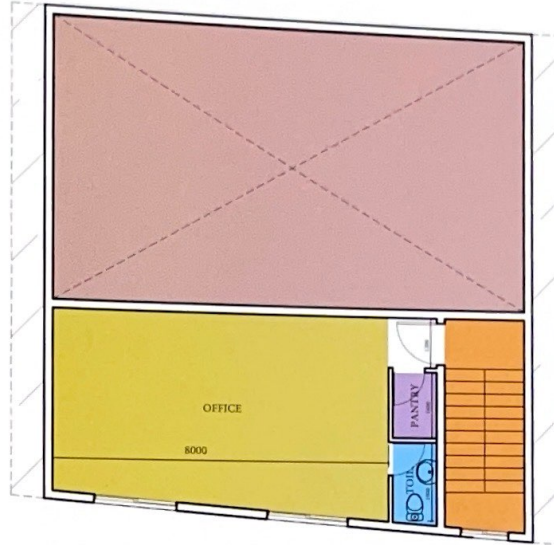


WAREHOUSE (25)

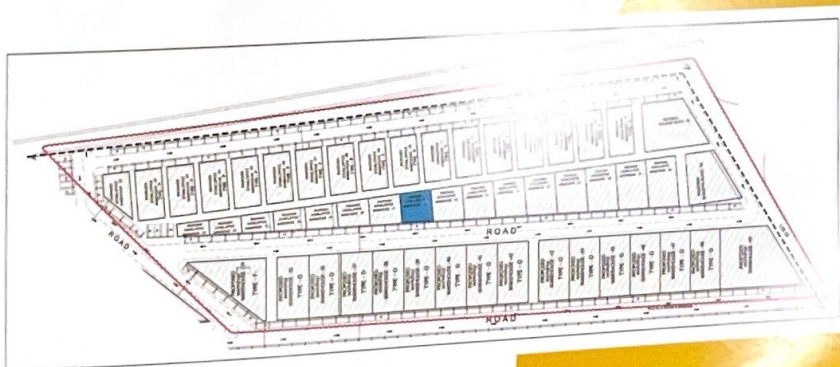
NO. OF FLOORS: **TWO**
PLOT NO.: **1070**
BLOCK, PH 1



GROUND FLOOR PLAN
143.08 SQ.M

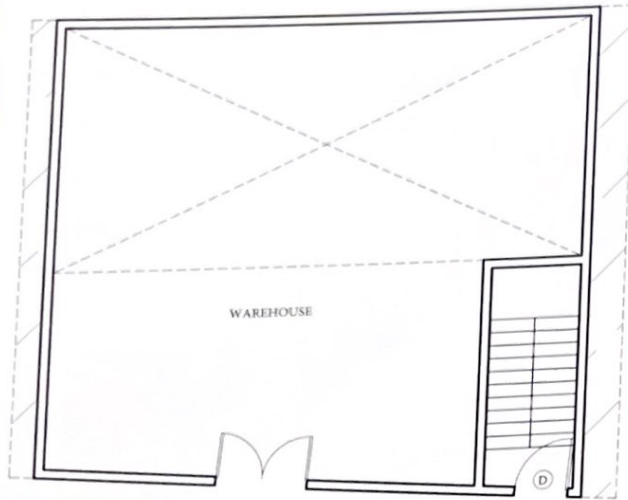


FIRST FLOOR PLAN
61.63 SQ.M

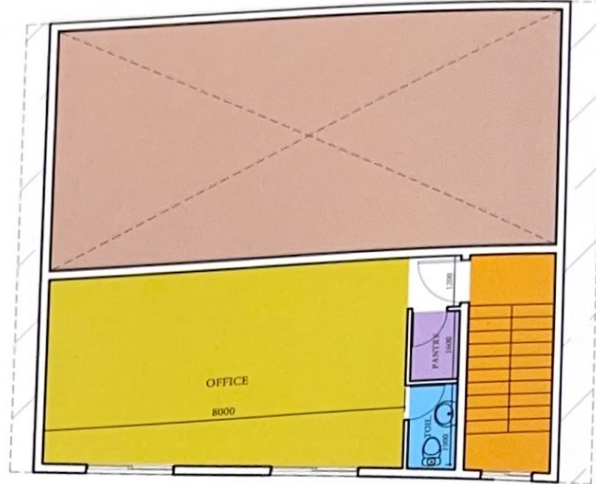


WAREHOUSE (26)

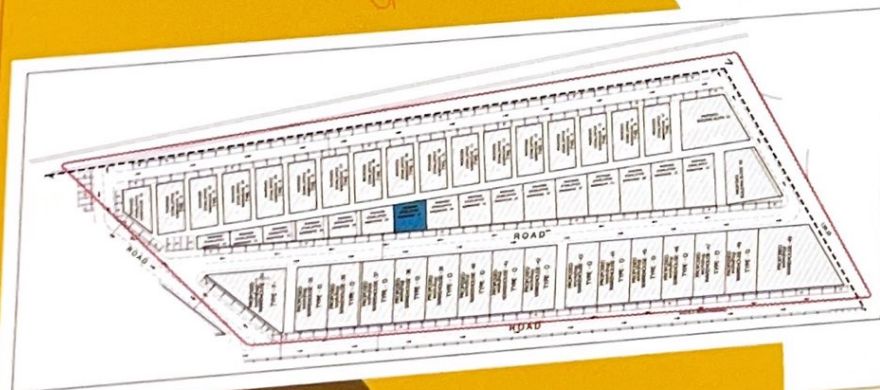
NO. OF FLOORS: TWO
PLOT NO.: 1070
BLOCK, PH 1



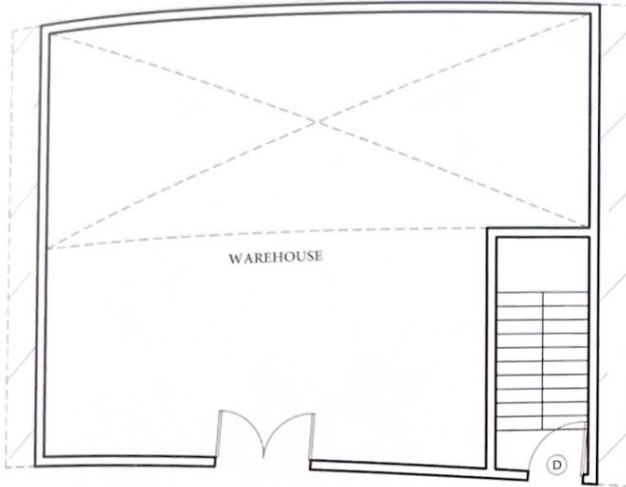
GROUND FLOOR PLAN
131.55 SQ.M



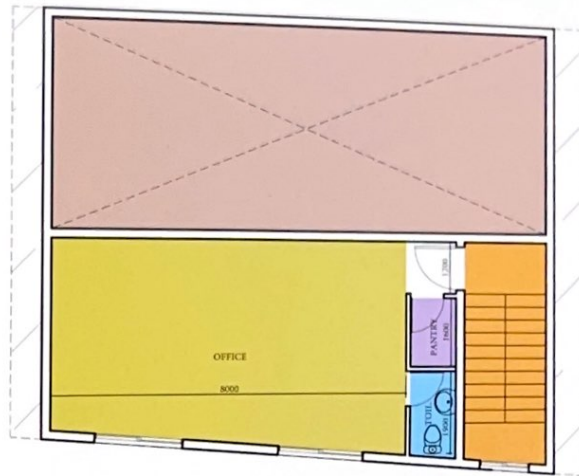
FIRST FLOOR PLAN
61.63 SQ.M



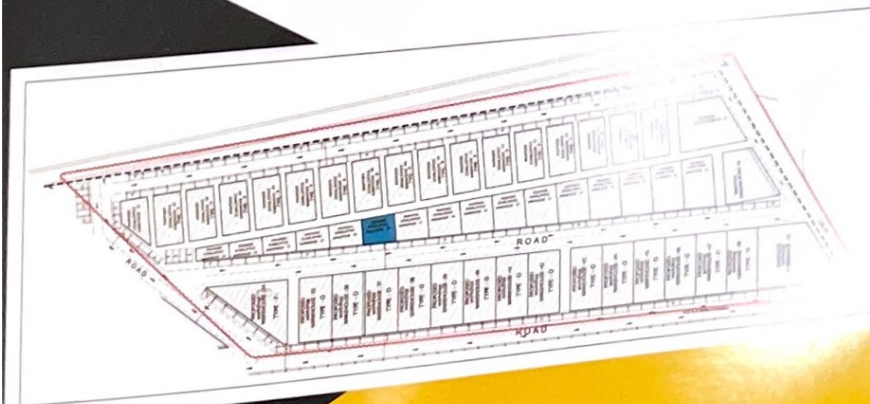
WAREHOUSE (27)
NO. OF FLOORS: **TWO**
PLOT NO.: **1070**
BLOCK, PH 1



GROUND FLOOR PLAN
120.01 SQ.M

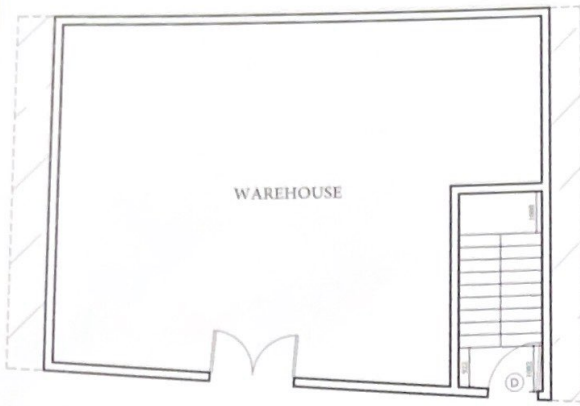


FIRST FLOOR PLAN
61.63 SQ.M

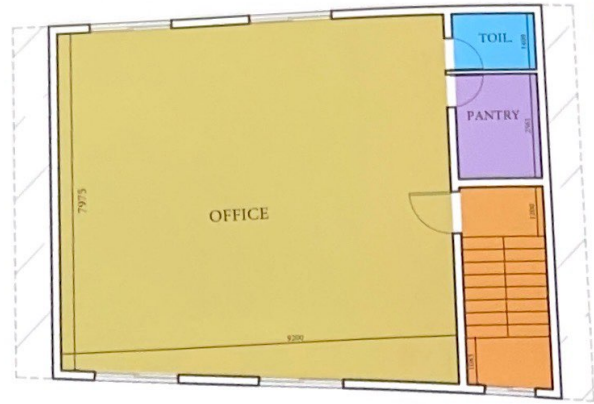


WAREHOUSE (28)

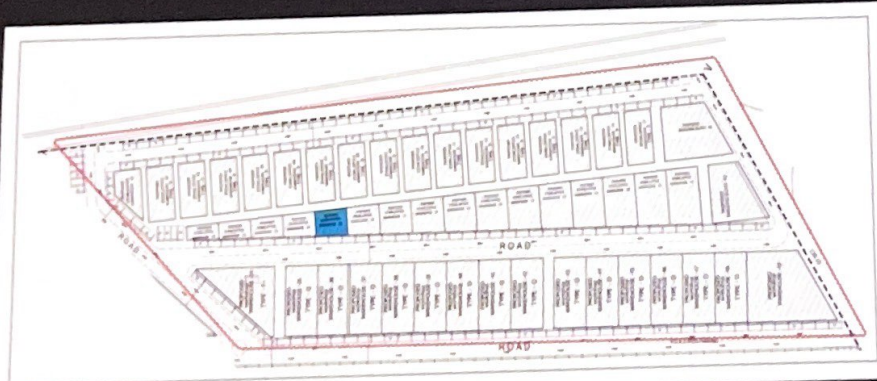
NO. OF FLOORS: **TWO**
PLOT NO.: **1070**
BLOCK, PH 1



GROUND FLOOR PLAN
108.48 SQ.M



FIRST FLOOR PLAN
108.48 SQ.M



WAREHOUSE (29)

NO. OF FLOORS: TWO
PLOT NO.: 1070
BLOCK, PH 1